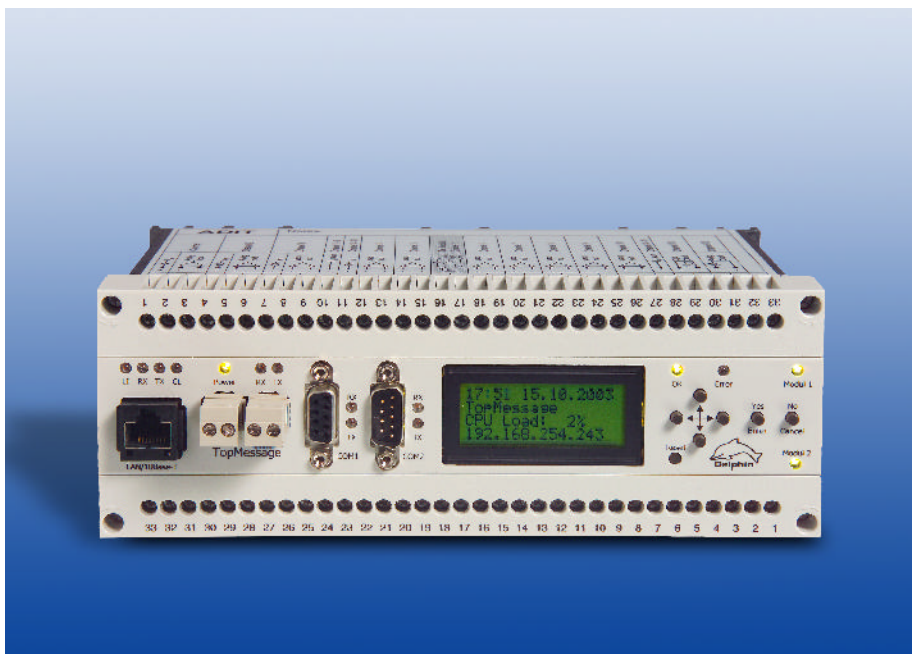


"FLIGHT RECORDER" for Industrial Use with Ethernet and Profibus Connection



TopMessage

Data Logging System

The Perfect Add-On

for Vibration Analysis and Diagnosis

"FLIGHT RECORDER" for Industrial Use with Ethernet and Profibus Connection

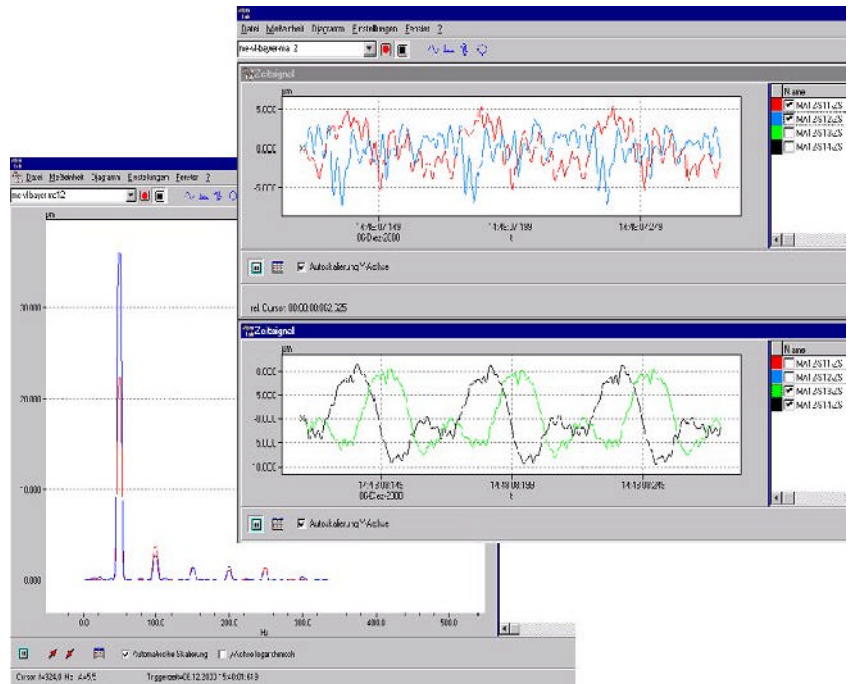
The perfect add-on for vibration analysis and diagnosis

Machine Diagnosis

Causes of troubles can be detected extra reliably by comparative measurements only. **TOPMessage allows next to conventional machine protection individually monitoring of particular faults and damage causes.** Therefore the safety degree of monitoring increases and simultaneously all relevant data of the actual machine condition are available. Preventive countermeasures can be planned and carried out in time.

Not only vibration signals but also **any expressive indication concerning the machine condition** as speed, efficiency, temperatures and process values **are continuously recorded and stored.** So after each trouble the reason and the progress can be easily detected.

Especially at the diagnostic of the vibration cause it is very helpful to know the progression of the signal. For example a sudden increase indicates a different cause than a slow increase. It is also helpful to know how machine data and process values have performed during the increase of vibration.



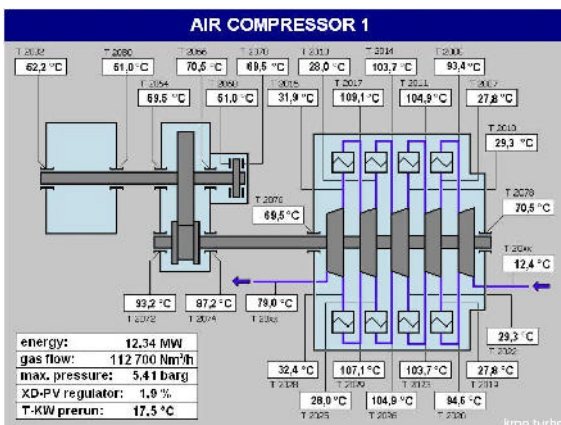
Vibration Analysis

TOPMessage also is the perfect solution for vibration analysis. Until today it was necessary to send an expert with a FFT-analyzer on-site to find out the reasons of machine troubles which were determined by an increased vibration level. Being on-site he was only able to record and analyse the vibration data of each measuring point one after another and not simultaneously.

TOPMessage permanently and simultaneously calculates FFT-spectra of up to 8 measuring points per module. The characteristics of each spectrum are determined and archived automatically. **To see the progression of the spectrum is the most helpful information to find out the cause of vibration troubles.**

Highlights

- ☛ If TOPMessage is connected to a network via Ethernet, all data can be handled from any authorized PC. **TOPMessage is a stand-alone unit, a PC is only necessary for the initial configuration.**
- ☛ Each unit is serially delivered with a 500 kByte-on-board-memory. The memory can be extended up to 1 GByte. **Due to the efficient compressing of data a 1 GByte memory is sufficient to store the data of several months with a resolution of less than 100 msec.** In online-mode the memory capacity is only limited by capacity of the hard disk.
- ☛ With "MedVisu", an optional visualising software, the process data can be shown in informative graphics.



More Information:

kmo turbo GmbH

Friedrichstrasse 59
88045 Friedrichshafen
Germany

phone: +49 7541 - 95289-0
fax: +49 7541 - 95289-20
mobile: +49 171 - 7432832

internet: www.kmo-turbo.de